



A.u.S. SPIELGERÄTE GMBH

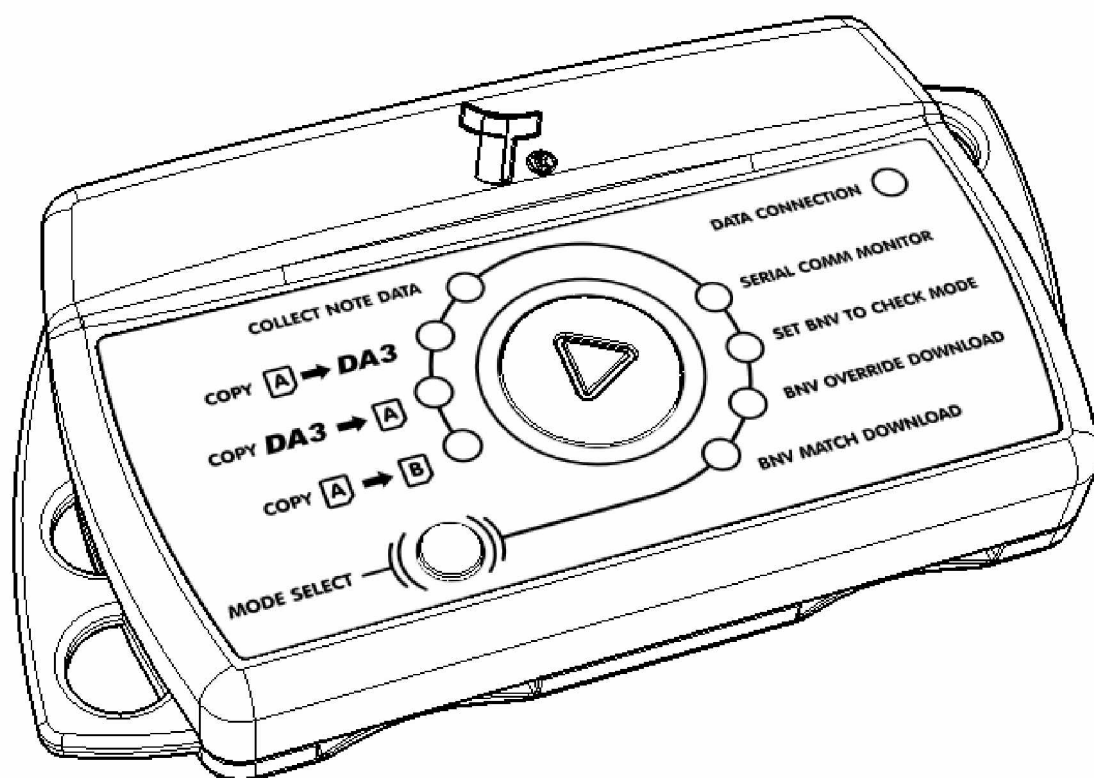
SCHEYDGASSE 48, AT 1210 WIEN

+43 (0) 1 271 66 00 65 FAX +43 (0) 1 271 66 00 75

www.aus.at ✉ verkauf@aus.at

Validator Programming System

DA3



Users Manual

GA339-2

Revision History

INNOVATIVE TECHNOLOGY LTD			
Title:	DA3 Users Manual		
Drawing No:	GA339		Project:
Author:	R. Soutter		Date: 04/01/2007
Format:	MS Word	2000	
Issue	Release Date	Modified By	Comments
Issue A	04/01/2007	RJS	First Draft
Issue B	22/01/2007	RJS	Second Draft – re-organised chapters
Issue C	08/02/2007	RJS	Third Draft – Addition of memory card formatting
Issue 1	13/02/07	RJS	Initial Release
Issue 2	20/02/07	RJS	Updated Appendix 2



CONTENTS

1. INTRODUCTION.....4

2. SCOPE OF DOCUMENT4

3. KIT COMPONENTS.....4

4. POWER REQUIREMENTS4

5. GENERAL DESCRIPTION.....5

6. SOFTWARE INSTALLATION.....6

7. CONNECTING THE DA3 TO A PC.....7

8. PROGRAMMING THE DA39

 8.1. Adding datasets to the Dataset Library9

 8.2. Adding Firmware files to the Firmware Library..... 10

 8.3. Storing files on the DA3 11

 8.4. Tagging files for BNV Override Download 12

 8.5. Importing and Exporting setup files..... 12

 8.6. Summary Information 13

 8.7. Memory card functions..... 13

 8.8. VPS Utilities 14

9. USING THE DA3..... 15

 9.1. Connecting a Validator to the DA3 15

 9.2. BNV Match Download 15

 9.3. BNV Override Download..... 16

 9.4. Set BNV to Check Mode 16

 9.5. Serial Comm Monitor 17

 9.6. Collect Note Data 17

 9.7. Copy A to DA3..... 17

 9.8. Copy DA3 to A..... 17

 9.9. Copy A to B 17

APPENDIX 1 – ERROR CODES 17

APPENDIX 2 – SUPPORTED NOTE VALIDATORS 17

1. Introduction

This manual describes the operation of the DA3 Validator Programming System, programmed with firmware version VPS1001000000000 or later, using the VPS software version 1.0.7 or later.

If you do not understand any part of this manual please contact the factory for assistance, contact details are below. In this way we may continue to improve our product.

A.u.S. Spielgeräte GmbH
Scheydgasse 48
A-1210 Wien Austria
Tel: +43 (0)1 271 66 00
Fax: +43 (0)1 2716600 75
E-mail: verkauf@aus.at
Web site: www.aus.at

Innovative Technology Ltd has a policy of continual product improvement. As a result the products supplied may vary from the specification described here.

The ITL Logo is an international registered trademark and is the property of Innovative Technology Limited.

Innovative Technology has a number of European and International Patents and Patents Pending protecting this product. If you require further details please contact the factory.

Innovative Technology is not responsible for any loss, harm, or damage caused by the installation and use of this product. This does not affect your local statutory rights. If in doubt please contact Innovative Technology for details of any changes

2. Scope of Document

This document is intended for those who will:

- Program the DA3
- Program validators using the DA3

3. Kit Components

The DA3 Kit comprises of the following:

- DA3 Programming Unit
- USB A to USB B cable
- DA3 to ITL Note Validator Cable
- Support CD

4. Power Requirements

When programming the DA3 using the VPS software, power is taken from the USB bus; no external power supply is required.

When programming validators, or using the DA3 card copy functions, power must be applied via the host machine or from a separate 12V DC, 1500mA power supply.

5. General Description

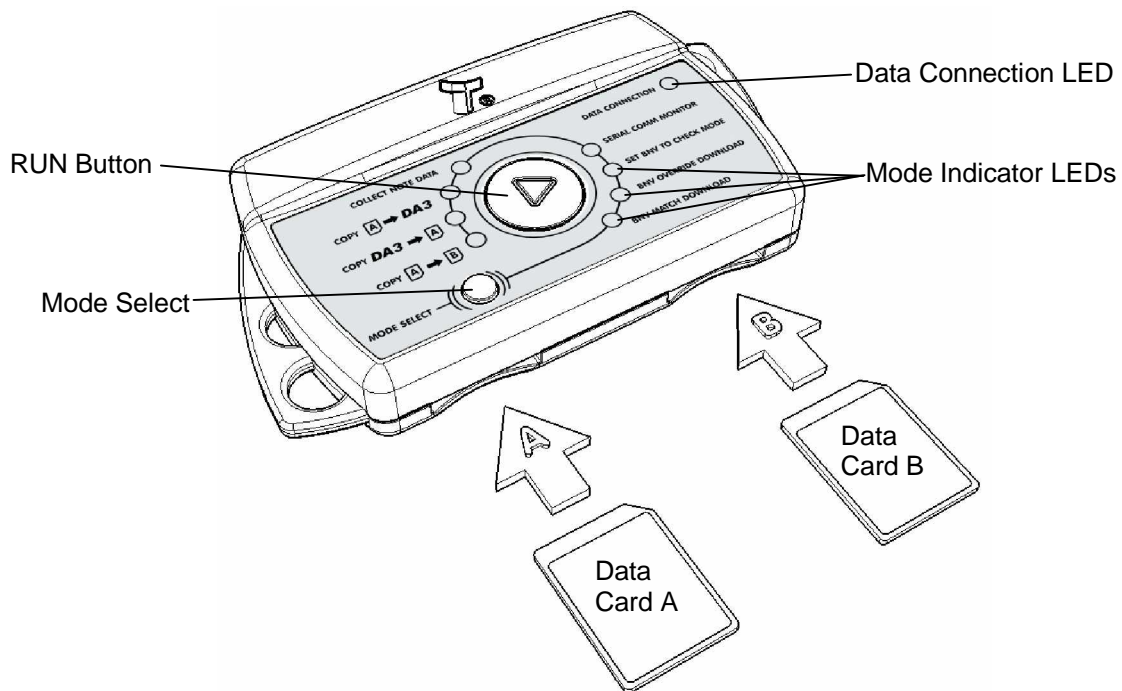
The DA3 is a programming system designed to enable the programming of ITL Bank Note Validators in the field without the use of a PC (see [Appendix 2](#) for supported products).

Many dataset and firmware files for different validator models can be stored on the DA3.

Once the DA3 has been programmed, the user can:

- Update the existing software within a validator using the BNV Match Download Function. For example, a validator already programmed for UK notes can be updated with the latest available UK dataset automatically. All custom settings will remain the same i.e. the number of pulses set and the special interface within the validator will not be changed
- Overwrite the stored software within a validator with pre-selected (tagged) files using the BNV Override Download Function. For example, a validator programmed for UK notes with the Binary interface can be re-programmed for Euro with the ccTalk interface.
- Test the functionality of the validator away from the host machine.

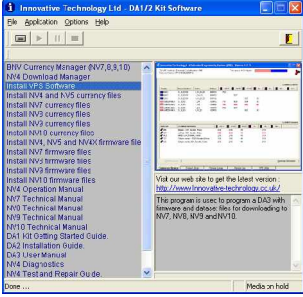
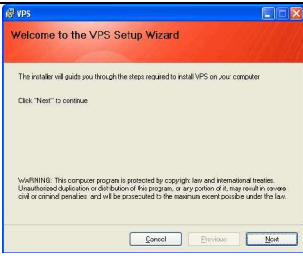
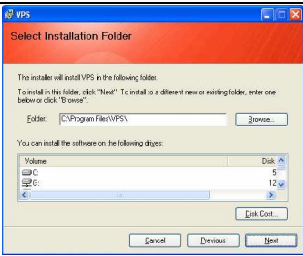
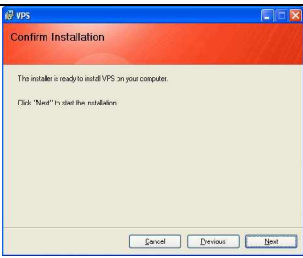
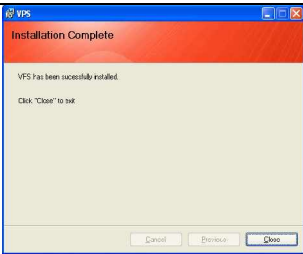
There are also two memory card slots to enable simple reprogramming of the DA3 away from a PC. The memory cards used must be an Atmel Dataflash® card, part number 9930550194



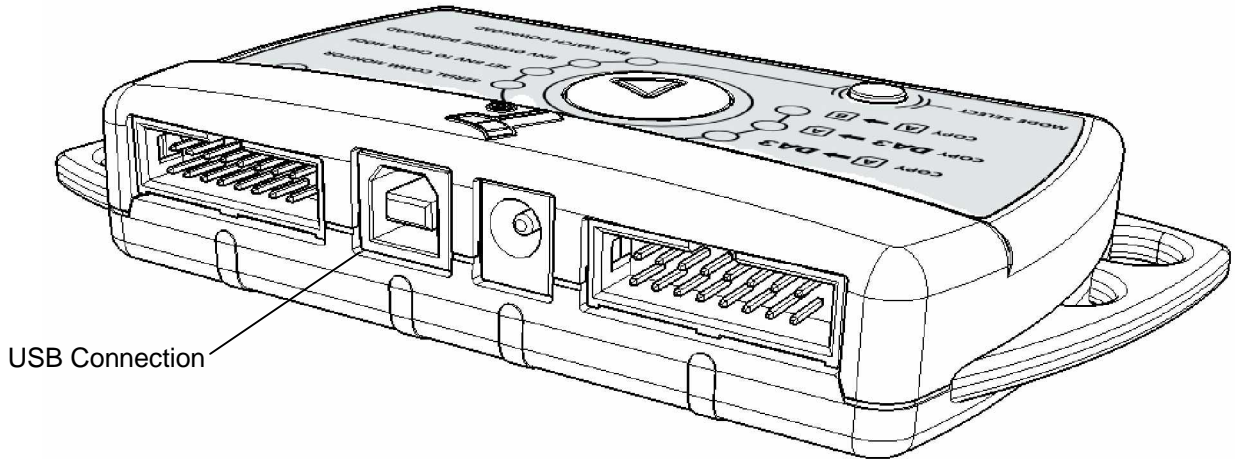
6. Software Installation

NOTE: - To install the software you will need administrator rights to your PC.

Insert the Support CD into your computers CD Drive. The menu should appear automatically.

	<p>Double click 'Install VPS Software' from the menu</p>
	<p>The <i>Welcome to the VPS Setup Wizard</i> will start</p> <p>Click 'Next'</p>
	<p>The <i>Select Installation Folder</i> screen will be displayed.</p> <p>Select the path where you wish to install the software (C:\Program Files\VPS\ is the default path)</p> <p>Click 'Next'</p>
	<p>A <i>Confirm Installation</i> screen will be displayed.</p> <p>Click 'Next'</p>
	<p>When the installation is complete you will see this screen.</p> <p>Click 'Close'</p>





7. Connecting the DA3 to a PC



NOTE: - To install the drivers for the DA3, you will need administrator rights to your PC.

Connect the DA3 to your PC via the supplied USB cable. (There is no need for a separate power supply when programming the DA3 from your computer). When the DA3 is only connected through the USB, the functions described in [Chapter 9](#) are not available.

	<p>The Windows 'Found New Hardware Wizard' will be displayed.</p> <p>Select 'No, not this time'</p> <p>Click 'Next'</p>
	<p>The wizard will then ask how you want to proceed.</p> <p>Select 'Install from a list or specific location (Advanced)'</p> <p>Click 'Next'</p>
	<p>The <i>Search and installation options</i> screen will be displayed.</p> <p>Select 'Include this location in the search'</p> <p>Click 'browse' and locate the driver files.</p> <p>The driver files are stored within the installation directory of the VPS software which is 'C:\Program files\VPS\ITL VPS USB Driver' by default.</p> <p>Click 'Next'</p>

	<p>A warning will be displayed informing you that the driver <i>has not passed Windows Logo testing</i></p> <p>Click 'Continue Anyway'</p>
	<p>Windows will then install the necessary software</p>
	<p>When the software has been installed you will see this screen.</p> <p>Click 'Finish'</p>
	<p>A 'Found New Hardware' message will be displayed when the installation is complete. This message will close automatically</p>

8. Programming the DA3

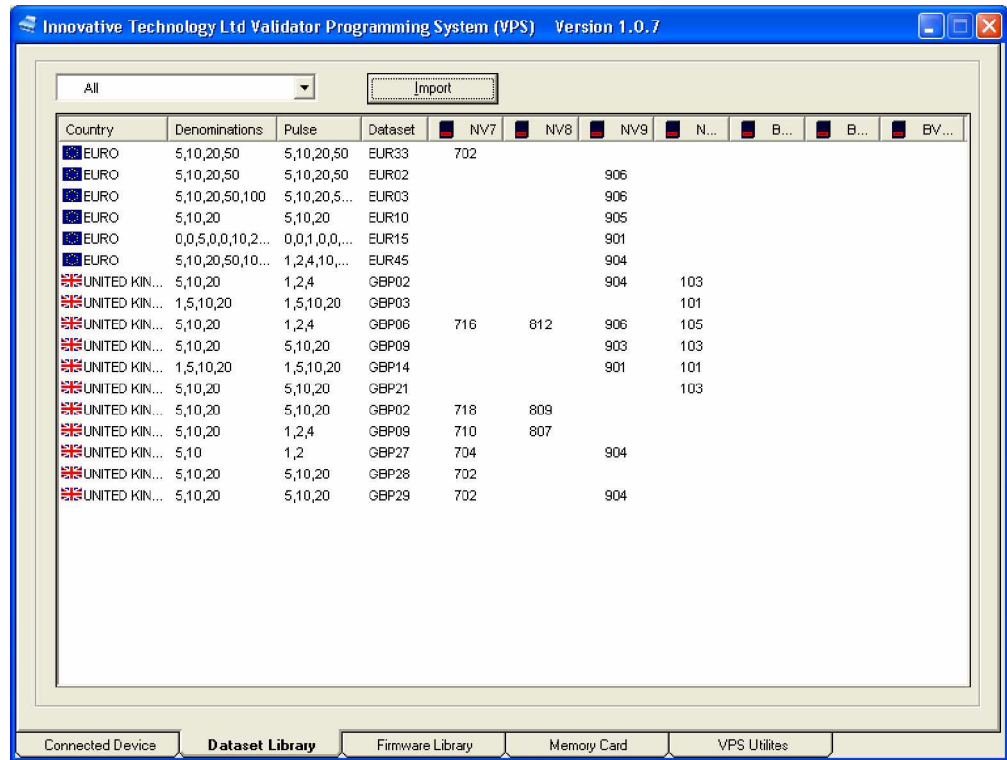
To use the DA3 you must first save the required datasets and firmware files to the DA3's internal memory. You can do this by either using the VPS Software (this chapter) or copying data from a pre-programmed memory card (see [Chapter 9.7](#)).

To use the VPS software, you must select the files you wish to store on the DA3 from the dataset library and the firmware library. When first used the libraries will be empty, you will need to add files as detailed below. You will also need to add new files when re-programming the DA3 with updated datasets or firmware.

8.1. Adding datasets to the Dataset Library

Select the *Dataset Library* tab. The screen will show all the dataset files that are currently stored in the library on your PC.

Click the *Import* button and locate the files you wish to add, the datasets will be added to the library when you click the *Open* button



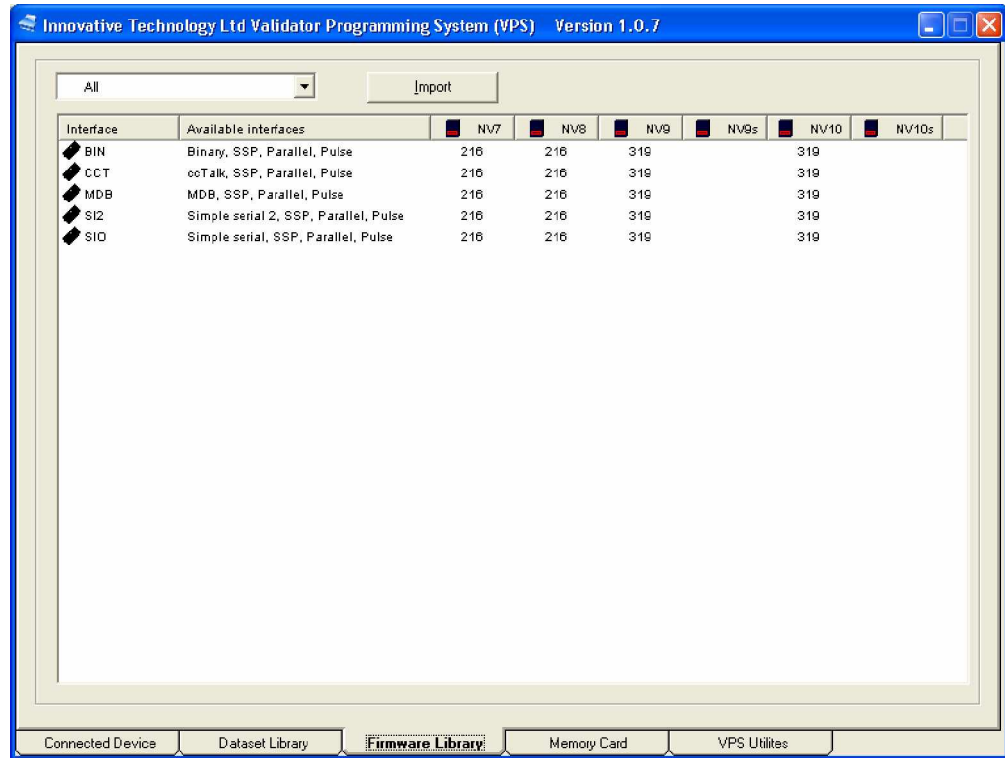
The screen lists the currencies that are stored in your library with the note denominations, number of pulses and the dataset code. The revision code of the dataset is listed under the relevant product heading. If the dataset for any product is not present then the version number will not be listed under the product heading.

To remove a file from the dataset library, select the dataset to be removed and right click the mouse. Select *'Removed Selected Datasets'* from the menu to remove the dataset for all validator models. Alternatively, select *'Remove For Validator'* and then the validator model to remove the file for individual validators.

8.2. Adding Firmware files to the Firmware Library

Select the *Firmware Library* tab. The screen will show all the firmware files that are currently stored in the library on your PC.

Click the *Import* button and locate the files you wish to add, the firmware files will be added to the library when you click the *Open* button

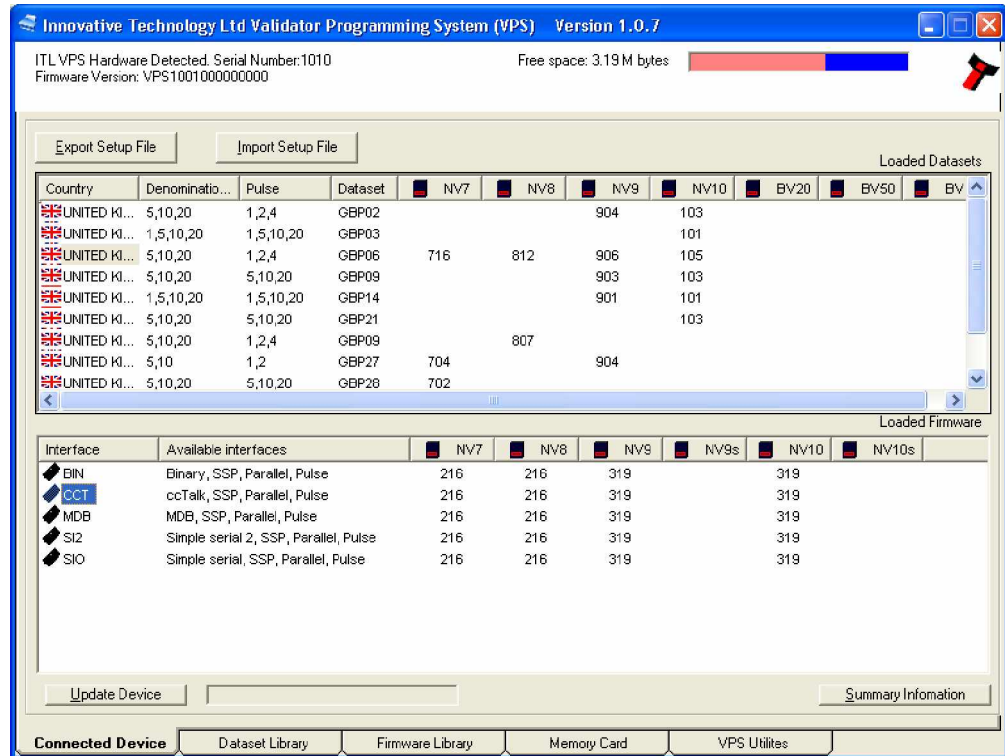


The screen lists the firmware interfaces that are stored in your library with the interfaces that are available by setting the validator switches. The version of the stored firmware file is listed under the relevant product heading. If the firmware for any product is not present then the version number will not be listed under the product heading.

To remove a file from the firmware library, select the interface to be removed and right click the mouse. Select '*Removed Selected Firmware*' from the menu to remove the firmware interface for all validator models. Alternatively, select '*Remove For Validator*' and then the validator model to remove the file for individual validators.

8.3. Storing files on the DA3

In the dataset and firmware libraries, select the files you wish to save to the DA3. Holding the *Shift* or *Ctrl* keys while clicking the mouse can make multiple selections. Right click the mouse and a menu will appear. *Select 'Add Selected To Device'* to add the file to the *Connected Device* window ready for download to the DA3.



On the *Connected Device* screen, files not yet downloaded to the DA3 will be listed in grey. At this point you can select which files to tag to be used for the *BNV Override Download* function (see [Chapter 8.4](#)).

Click on the '*Update Device*' button to save the listed files to the DA3 memory.

To remove a file from the DA3, select the files to be removed and right click the mouse. Select '*Removed Selected*' from the menu to remove the files for all validator models, or select '*Remove For Validator*' and then the validator model to remove the file for individual validators.

Click on the '*Update Device*' button to update the DA3 memory and remove the files.

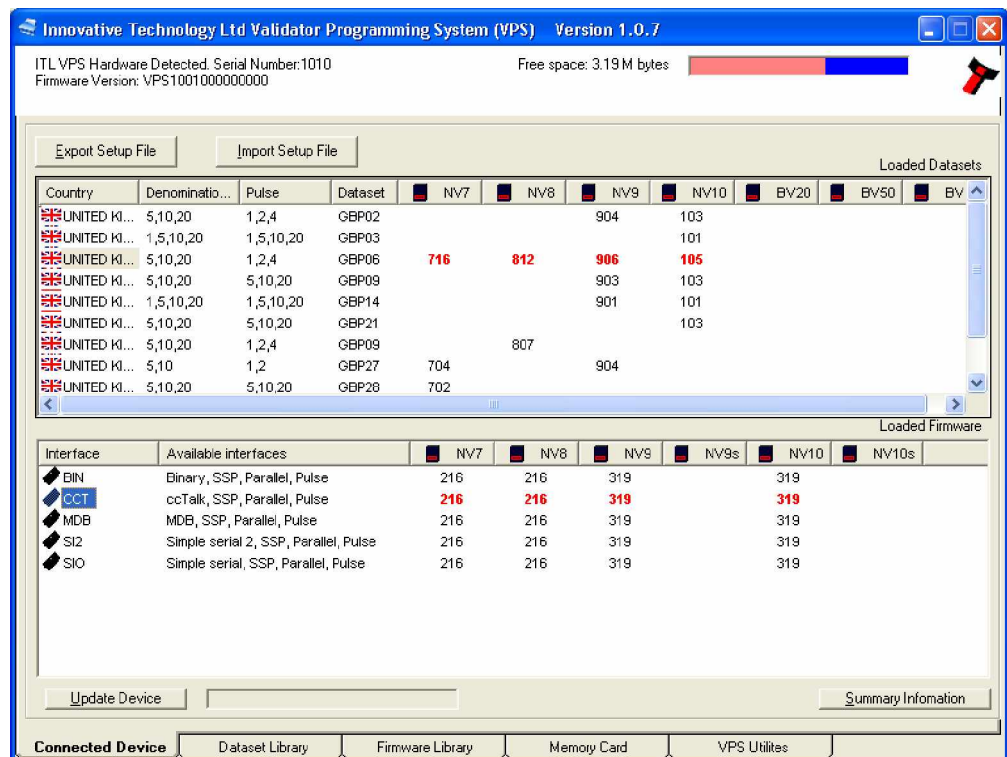
8.4. Tagging files for BNV Override Download

In the *Connected Device* window, click the revision code under the relevant product heading to tag the required dataset. Each product can have a different dataset tagged. For example, NV7 could be tagged as UK, whereas NV8 could be Euro.

The tagged datasets will be highlighted as red text.

The same procedure should then be used for tagging the firmware interfaces for each product.

See [Chapter 9.3](#) for details on the BNV Override Download function.



Once the required files are tagged, click the *Update Device* button to save the settings to the DA3 memory.

8.5. Importing and Exporting setup files

The files contained within the *Connected Device* window can be exported into a .DA3 file. Another user can then import this file. All dataset and firmware files will be imported, and the appropriate files will still be tagged. This function is useful to ensure other DA3 users have the same files and settings stored.

To export a setup file, click the *'Export Setup File'* button, type in a file name and select the location to store the file, then click the *'Save'* button.

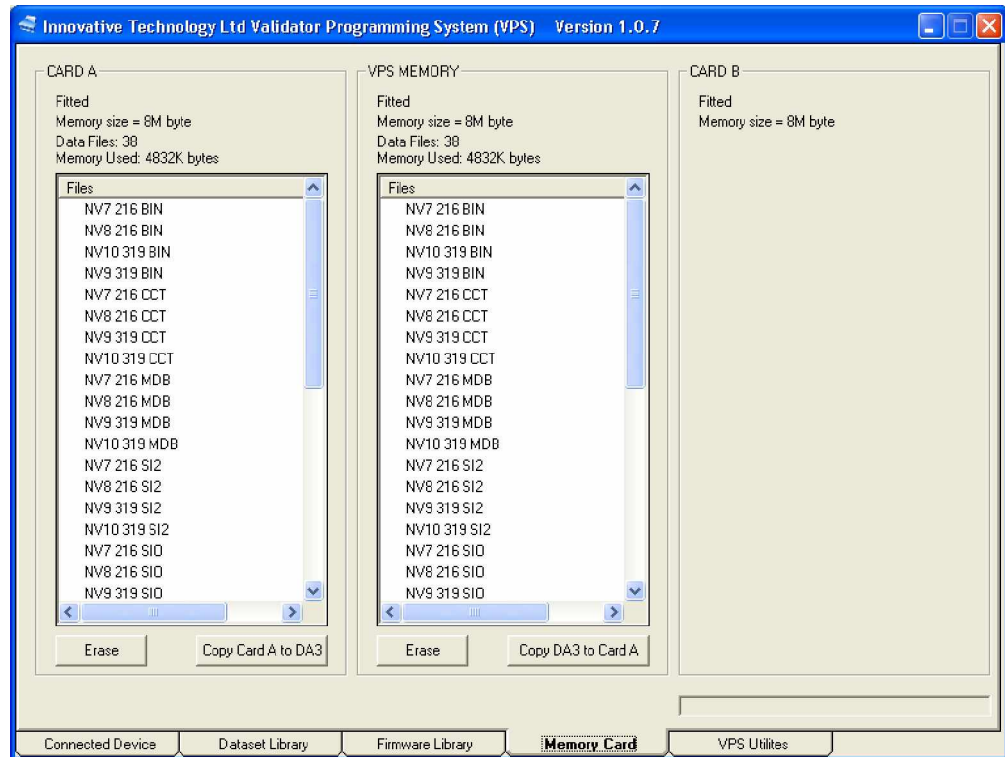
To import a setup file, click the *'Import Setup File'* button, locate the file you wish to import and click the *'Open'* button. Once the files are imported, you must click the *'Update Device'* button to save them to a DA3.

8.6. Summary Information

In the *Connected Device* window, click on the 'Summary Information' button to run a report of all the files stored on the connected DA3.

8.7. Memory card functions

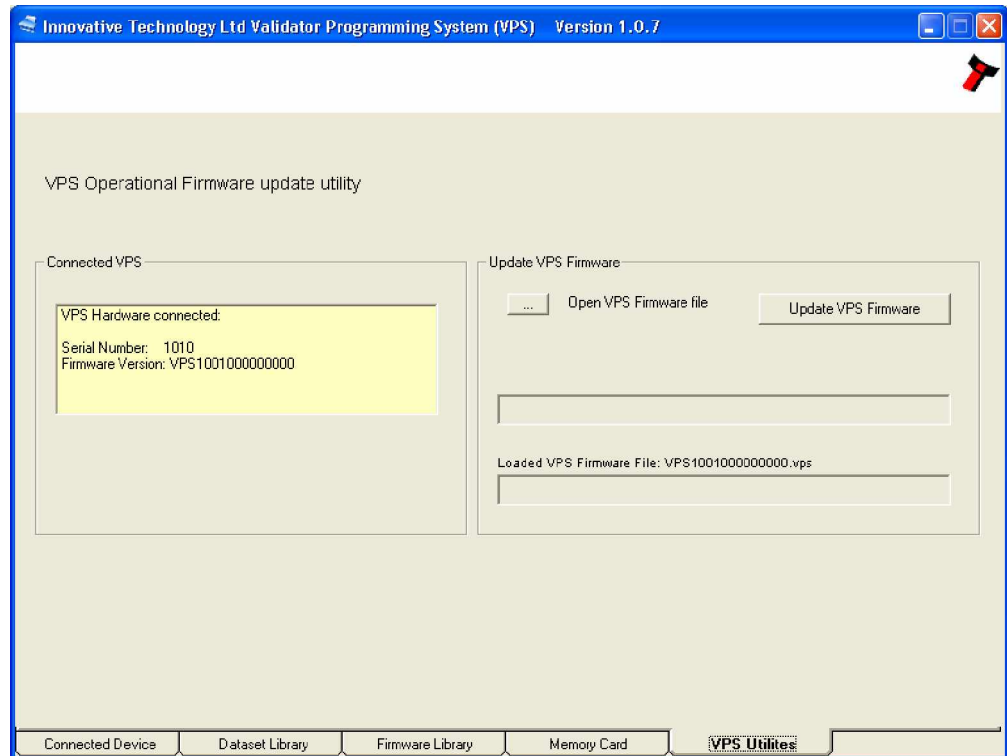
Within the VPS software you can copy files to and from Memory card A, Memory card B and the DA3 memory. Also delete files from Memory card A, Memory card B and the DA3 memory.



NOTE: - New memory cards may need to be formatted. To format cards, disconnect the DA3 from USB, host connector and power connector. Insert the new card into memory card slot [A] and apply power either through the power connector or the host connector. If the card is not formatted, the centre button will light red and no further operation will be possible. Remove and re-apply the power, the memory card will then be formatted.

8.8. VPS Utilities

Using the VPS Utilities screen, you can update the operational firmware of your DA3



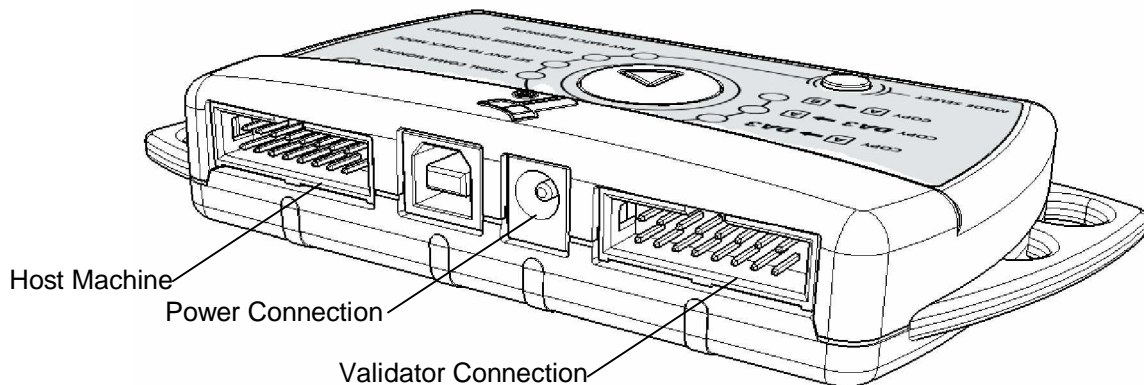
Click the '...' button to browse for the firmware file, and then click the 'Update VPS Firmware'. The DA3 operational firmware will be updated.

DO NOT disconnect the DA3 while the firmware upgrade is taking place. Doing so could permanently damage the DA3.

9. Using the DA3

9.1. Connecting a Validator to the DA3

Connect the validator to the DA3 via the supplied 16way ribbon cable. Power must be applied to the DA3 via a separate 12V 1500mA DC power supply, or from the host machine. The functions described in this chapter will not be available if the DA3 is powered only by the USB cable.



9.2. BNV Match Download

This mode will update the connected BNV with the latest version of dataset and firmware currently programmed into the BNV. All custom settings (pulses, special interface etc) will remain the same. Tagging files has no effect when the DA3 is used in this mode.

For this function to operate, the versions of firmware and dataset stored within the DA3 memory must be later than that stored within the connected validator.

- Set the BNV to SSP mode as described in the BNV product manual. Depending on the BNV model, this will be either by setting the dipswitches as shown on the product label, or by pressing a download reset button
- Connect the BNV to the DA3 as described in [chapter 9.1](#), and apply power either from the host machine or from a separate 12V power supply.
- Press the *Mode Select* button repeatedly until the blue *BNV MATCH DOWNLOAD* LED is illuminated. The *RUN* button will pulse green to indicate that this function is available.
- Press the Centre *RUN* button.
- The centre *RUN* button will change colour to pulsing blue, and the Mode Indicator LEDs will rotate back and forth as communication is established and the current BNV settings are determined. The *DATA CONNECTION* LED will flicker as data is transferred to and from the DA3. If there are no matching firmware or dataset files stored on the DA3, the centre *RUN* button will change colour to pulsing red, and the blue *BNV MATCH DOWNLOAD* LED will flash a code as described in [Appendix 1](#).
- If all the files are available on the DA3, the Mode Indicator LED's will rotate in an anti-clockwise direction while the firmware is updated
- Once the firmware update is complete, the Mode Indicator LED's will rotate in a clockwise direction as the dataset is updated.
- When the firmware and dataset are successfully updated, the centre *RUN* button will change to a pulsing green light and the BNV will reset.
- If necessary, reset the BNV dipswitches to their original positions before re-connecting the BNV to the host machine.

9.3. BNV Override Download

This mode will overwrite the BNV with pre-selected (Tagged) firmware and dataset files.

For this function to operate, the DA3 must have dataset and firmware files tagged for the attached BNV model. See [Chapter 8.4](#) for details on tagging files.

- Set the BNV to SSP mode as described in the BNV product manual. Depending on the BNV model, this will be either by setting the dipswitches as shown on the product label, or by pressing a download reset button.
- Connect the BNV to the DA3 as described in [chapter 9.1](#), and apply power either from the host machine or from a separate 12V power supply.
- Press the *Mode Select* button repeatedly until the blue *BNV OVERRIDE DOWNLOAD* LED is illuminated. The *RUN* button will pulse green to indicate that this function is available.
- Press the Centre *RUN* button.
- The centre *RUN* button will change colour to pulsing blue, and the Mode Indicator LEDs will rotate back and forth as communication is established. The *DATA CONNECTION* LED will flicker as data is transferred to and from the DA3. If there are no files tagged for the connected BNV, the centre *RUN* button will change colour to pulsing red, and the blue *BNV OVERRIDE DOWNLOAD* LED will flash a code as described in [Appendix 1](#).
- The Mode Indicator LED's will rotate in an anti-clockwise direction while the firmware is updated
- Once the firmware update is complete, the Mode Indicator LED's will rotate in a clockwise direction as the dataset is updated.
- When the firmware and dataset are successfully updated, the centre *RUN* button will change to a pulsing green light and the BNV will reset.
- If necessary, set the BNV dipswitches to their required positions before re-connecting the BNV to the host machine.

9.4. Set BNV to Check Mode

This function enables the validator to accept notes so that testing can take place outside of the host machine.

- Set the BNV to SSP mode as described in the BNV product manual. Depending on the BNV model, this will be either by setting the dipswitches as shown on the product label, or by pressing a download reset button.
- Connect the BNV to the DA3 as described in [chapter 9.1](#), and apply power either from the host machine or from a separate 12V power supply.
- Press the *Mode Select* button repeatedly until the blue *SET BNV TO CHECK MODE* LED is illuminated. The *RUN* button will pulse green to indicate that this function is available.
- Press the Centre *RUN* button.
- The centre *RUN* button will change colour to pulsing blue, and the *DATA CONNECTION* LED will flash as data is transferred to and from the DA3. If communications can not be established the centre *RUN* button will change colour to pulsing red, and the blue *SET BNV TO CHECK MODE* LED will flash a code as described in [Appendix 1](#).

- When notes are inserted and accepted, the *Mode Indicator* LED will switch off a number of times according to which channel the note has been credited. For example, if a note from channel 3 has been inserted, the *Mode Indicator* LED will switch off and back on again 3 times

9.5. Serial Comm Monitor

This function is not yet implemented. The centre *RUN* button will not illuminate to indicate that this function is not available.

9.6. Collect Note Data

This function is not yet implemented. The centre *RUN* button will not illuminate to indicate that this function is not available.

9.7. Copy A to DA3

This function copies the contents of the memory card in slot A to the internal memory of the DA3. All files stored in the DA3 memory will be overwritten. Note that new memory cards may need formatting, see [chapter 8.7](#) for more details.

- Press the *MODE SELECT* button until the COPY [A] ÷ DA3 LED is illuminated
- Press the *RUN* button – the *RUN* button will change colour from pulsing green to solid blue, and the *MODE SELECT* button light will switch off.
- Press the *RUN* button again within 3 seconds to confirm.
 - § If the *RUN* button is not pressed a second time within 3 seconds, the colour of the button will revert to green, and the *MODE SELECT* button will re-light blue.
 - § If there is no memory card in slot A, or the memory card is blank, the centre *RUN* button will pulse red, and the blue COPY [A] ÷ DA3 LED will flash a code as described in [Appendix 1](#).
- The Mode Indicator LED's will rotate in an anti-clockwise direction while the entire contents of the memory card in slot A are copied to the internal memory of the DA3. All files stored in the DA3 memory will be overwritten.
- When the copy is complete, the centre *RUN* button will pulse green.

9.8. Copy DA3 to A

This function copies the contents of the internal memory of the DA3 to the memory card in slot A. All files stored on the memory card will be overwritten. Note that new memory cards may need formatting, see [chapter 8.7](#) for more details.

- Press the *MODE SELECT* button until the COPY DA3 ÷ [A] LED is illuminated
- Press the *RUN* button – the *RUN* button will change colour from pulsing green to solid blue, and the *MODE SELECT* button light will switch off.
- Press the *RUN* button again within 3 seconds to confirm.
 - § If the *RUN* button is not pressed a second time within 3 seconds, the colour of the button will revert to green, and the *MODE SELECT* button will re-light blue.
 - § If there is no memory card in slot A the centre *RUN* button will pulse red, and the blue DA3 ÷ [A] LED will flash a code as described in [Appendix 1](#).
- The Mode Indicator LED's will rotate in an anti-clockwise direction while the entire contents of the DA3 are copied to the memory card in slot A. All files stored on the memory card will be overwritten.

- When the copy is complete, the centre *RUN* button will pulse green.

9.9. Copy A to B

This function copies the contents of the memory card in slot A to the memory card in slot B. All files stored on the memory card in slot B will be overwritten. Note that new memory cards may need formatting, see [chapter 8.7](#) for more details.

- Press the *MODE SELECT* button until the COPY [A] ⇌ [B] LED is illuminated
- Press the *RUN* button – the *RUN* button will change colour from pulsing green to solid blue, and the *MODE SELECT* button light will switch off.
- Press the *RUN* button again within 3 seconds to confirm.
 - § If the *RUN* button is not pressed a second time within 3 seconds, the colour of the button will revert to green, and the *MODE SELECT* button will re-light blue.
 - § If there is no memory card in slot [A] or [B], or the memory card in slot [A] is blank, the centre *RUN* button will pulse red, and the blue COPY [A] ⇌ [B] LED will flash a code as described in [Appendix 1](#).
- The Mode Indicator LED's will rotate in an anti-clockwise direction while the entire contents of the memory card in slot [A] are copied to the memory card in slot B. All files stored on the memory card in slot [B] will be overwritten.
- When the copy is complete, the centre *RUN* button will pulse green.

Appendix 1 – Error Codes

The table below shows an explanation of the error codes displayed on the Mode Indicator LED's if the centre *RUN* button changes colour to red.

The flash code is shown by a long flash then a number of short flashes. The number of short flashes indicates the cause of failure

Number Of Flashes	Cause of failure
2	No validator connection found
3	No valid download files found
4	Download fail
5	Memory card fail

Appendix 2 – Supported Note Validators

The DA3 will operate with the following ITL products

- NV7
- NV8
- NV9
- NV10
- BV100